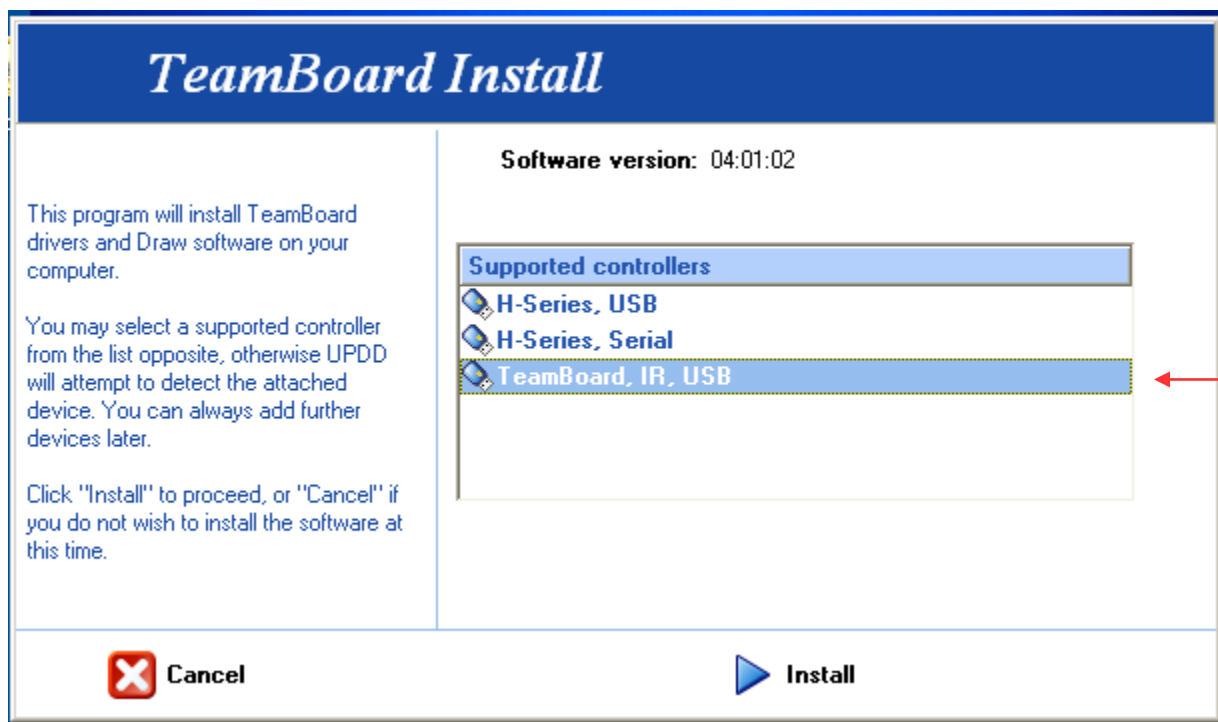


TeamBoard IR Setup

1. The TeamBoard Driver can be downloaded from the TeamBoard website.
<http://www.teamboard.com.au/support/>
2. Make sure you have logged in with full local administration rights to the computer.
3. Run the **setup.exe** file.
4. When the TeamBoard install window displays, select TeamBoard, IR, USB



5. Run through the remaining installation prompts.
6. Calibrate the TeamBoard IR by selecting the Calibrate > Interactive from the TeamBoard Icon in the System Tray. (Refer to TeamBoard Calibration Demo in Troubleshooting).