



# Installing and Activating WizTeach

WizTeach tools are designed to allow teachers the choice of tool combinations for the subject that they teach. Addressing a wide variety of learning needs across a spectrum of subjects, teachers can select as few or as many WizTeach tools to display on screen at any one time.

Unlike other annotation or Interactive Whiteboard applications, WizTeach tools can be used live on the Internet, you can annotate, draw, and explain a concept while directly working inside your web browser or other software application. WizTeach tools can even be used alongside your existing Interactive Whiteboard software.

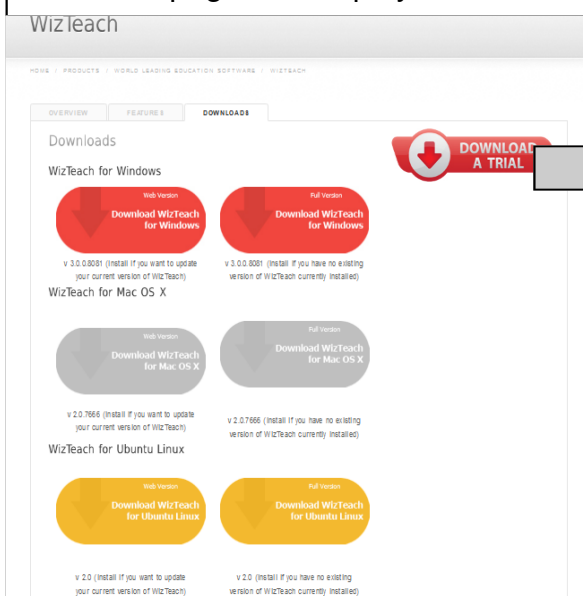
There 2 ways to install WizTeach onto your Laptop or PC. First is by using the CD which comes with the TeamBoard Interactive Whiteboard, or by downloading the software from the internet and installing it.

This document will cover how to install WizTeach using both these methods.

## Step 1

### Install from the Internet

Go to <http://www.teamboard.com.au/products/world-leading-education-software/wizteach/download>  
The below page will display.



Click on the full version for either Windows or Mac OS X. The full version contains all the clip art, which is very useful when creating and delivering lessons.



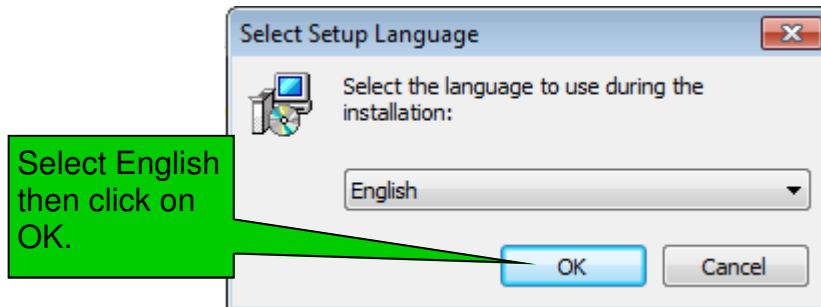
v 3.0.0.8081 (Install if you have no existing version of WizTeach currently installed)



v 2.0.7666 (Install if you have no existing version of WizTeach currently installed)

## Step 2

If installing from a download from the Internet or a CD the next steps are identical.

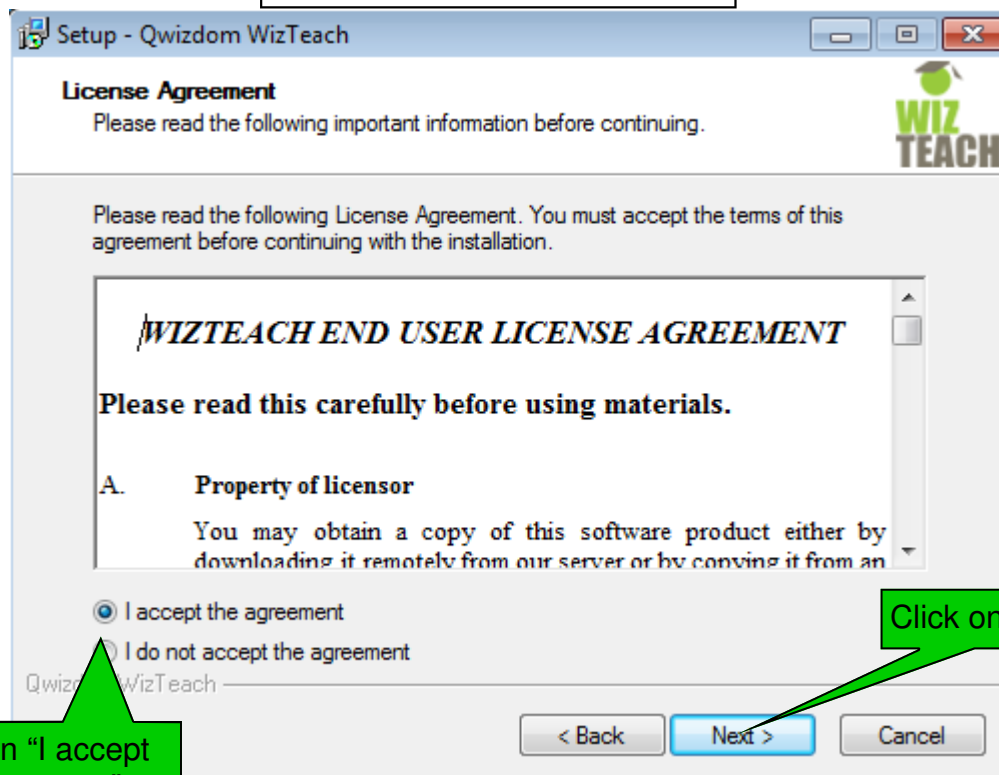


## Step 3



Click on Next

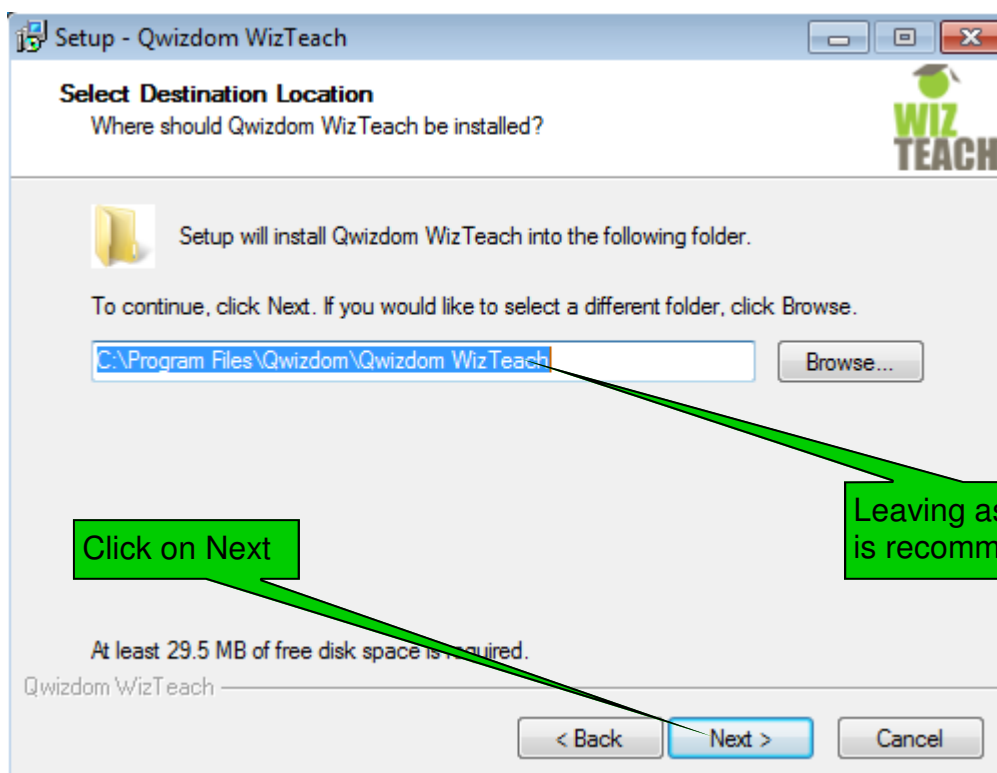
# Step 4



Click on "I accept the agreement"

Click on Next

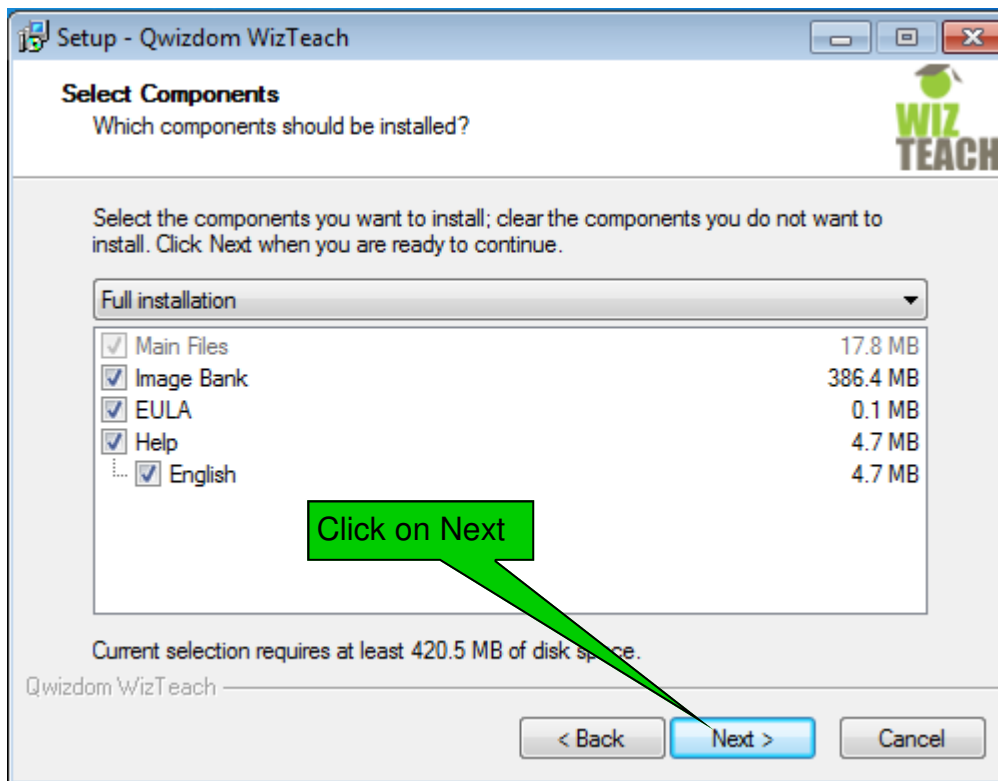
# Step 5



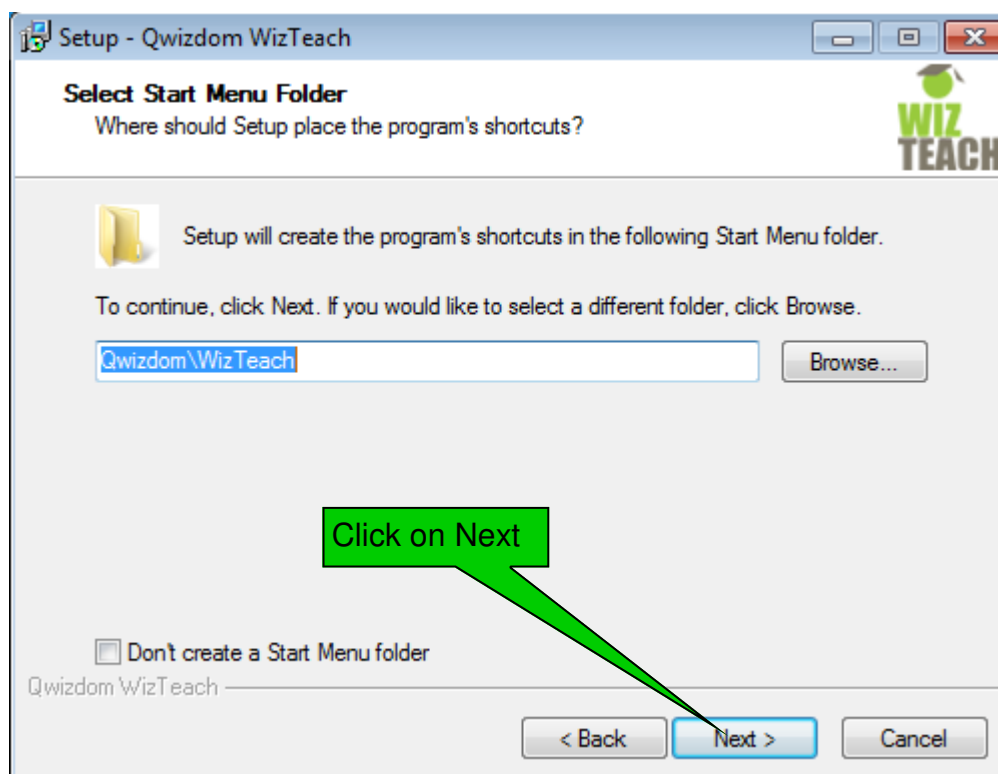
Click on Next

Leaving as default is recommended

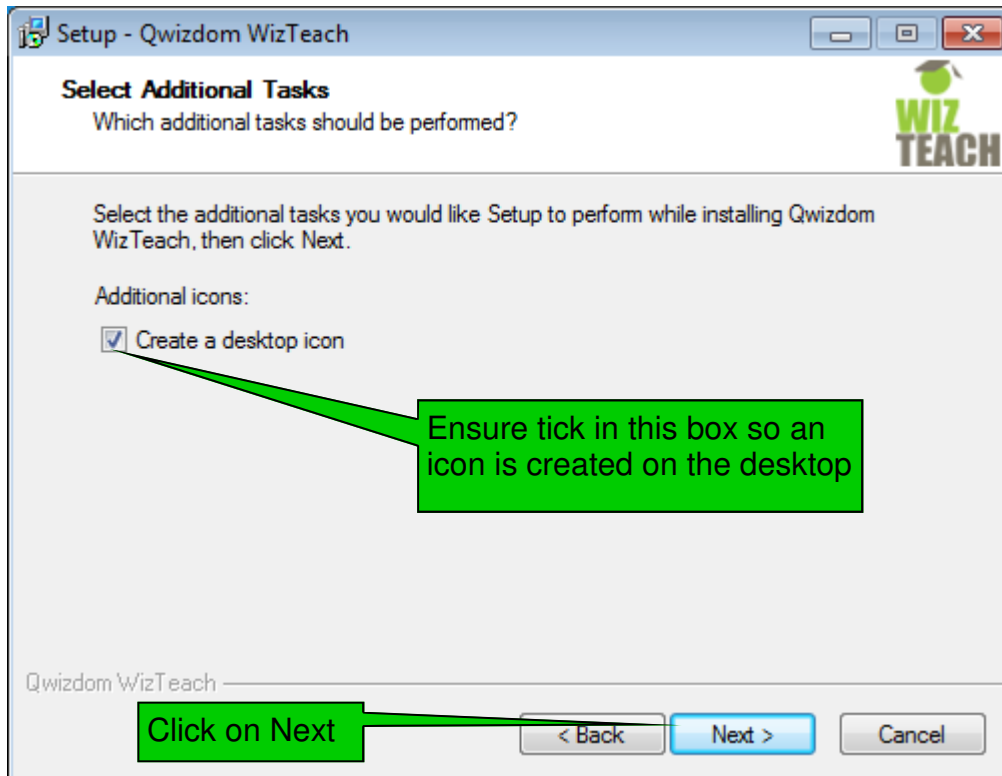
# Step 6



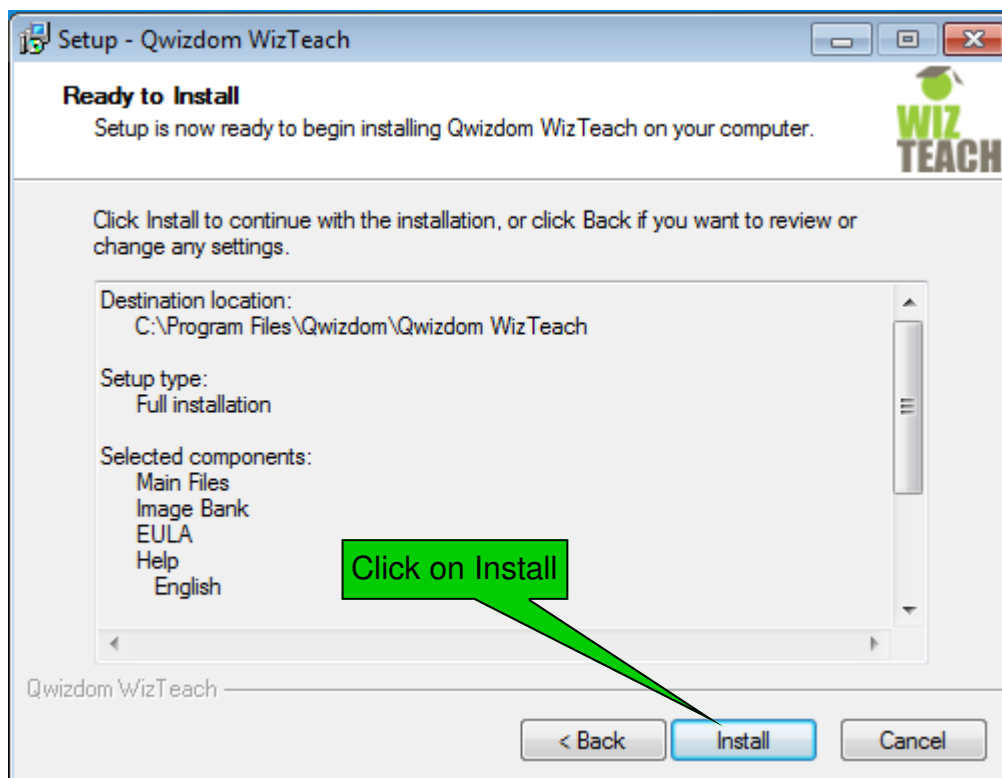
# Step 7



# Step 8



# Step 9



Once the program has installed. You will need to activate the software.

The below process will activate the program and allow you to use the full features within WizTeach

# Step 10



# Step 11

**NOTE:** In some schools the WizTeach program cannot automatically activate due to network configuration. If the below dialog box appears click on Activate via Website. The next steps will show you what to do to activate WizTeach.



# Step 12

Your Web Browser will launch and you will be presented with your 32 digit activation code. Enter this code into the area indicated in the next step.

## WizTeach Activation

Please enter the Activation code below into the WizTeach Activation window

6914 3810 35F2 2BB4 477D E49B 26B6 C2AA

Copyright © 2009 WizTeach | Produced by Qwizdom UK Ltd | All rights reserved.

# Step 13

## Product Key & Activation

Activate on another computer

- 1 Open a web browser and go to <http://wizteach.com/activation/>
- 2 You will be prompted to enter your Serial Number, which is shown in the box below.
- 3
- 4 You will be given an Activation Code, which you should copy and paste into the box below.

Enter Activation code here

E 5319

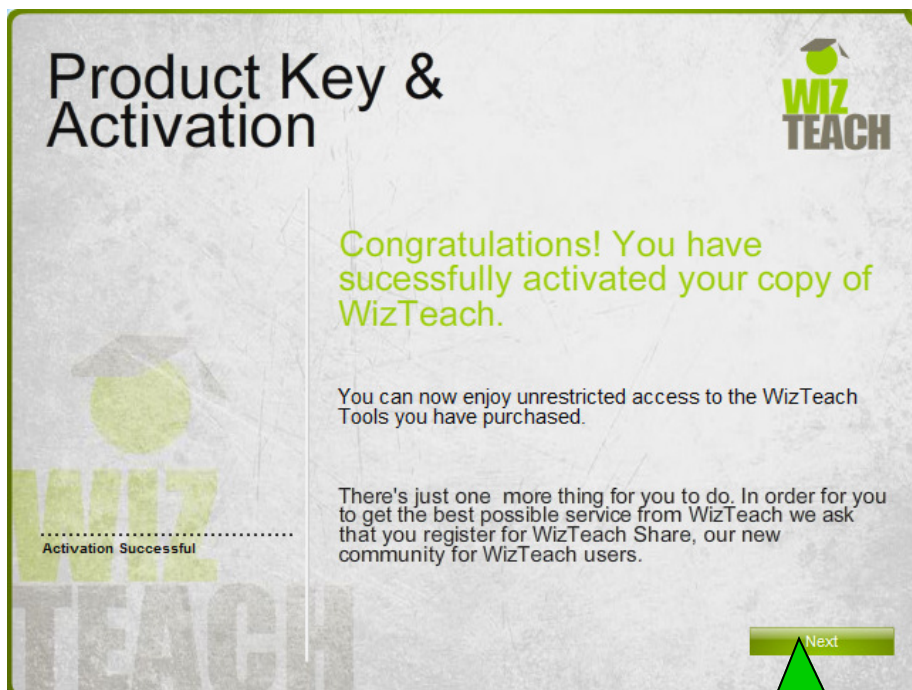
clear all

Back Next

**Well Done..... You have now activated your WizTeach software, and it is now ready to use.**

You can now register for WizTeach Share. WizTeach Share is an on-line community which allows you to access a wealth of lessons created by Educators from around the world. You can search for these lessons by language and subject.

You can upload your own lessons and chat with other WizTeach users.



Click next to register for WizTeach

# Product Key & Activation



## WizTeach Share Registration



Register for WizTeach Share to receive many free benefits.

Register Later Register Now

WizTeach Share Registration

Click register now.

### Why Register?

Register with WizTeach and get:

- Access WizTeach Share - the online community that lets you share resources and chat with other WizTeach users.
- You will receive a free WizTeach home use license (requires a valid WizTeach license).
- Notification of software updates and new features.



1 User Account Details 2 Contact Information

**Username \***

**Password \***

Enter Password

Strength indicator

Confirm Password

**Email \***

Enter Email

Confirm Email

Next

Fill in all the required details and click next

Once you have registered you will then need to log into WizTeach Share using the details you entered.

Below is the first page of WizTeach Share. This is where you search for lessons and resources.

The screenshot shows the WizTeach Share website homepage. At the top is a navigation bar with links for Home, About, Blog, **WizTeach Share**, Tutorials, Free Trial, Book Training, Contact, and Store. Below this is a secondary bar with Resources and Contribute. The main header area contains the text 'WizTeach Share'. The content is divided into several sections:

- Latest Resources:** A grid of resource cards, each with a thumbnail, title, star rating, and a 'more' link. Resources include: Circuits (5 stars), Cálcul i geometria Cicle Inicial (5 stars), Circle Calculations (5 stars), Maths & Sport (5 stars), Muscular System (5 stars), CE1 5-7 Ans Mathematiques (5 stars), Angle Rules (5 stars), Balanced and Unbalanced Forces (5 stars), The Central Nervous System (5 stars), and Multiples of 5 (5 stars).
- Search resources:** A search form with dropdown menus for 'By language:' (English - 33), 'By Category:', 'Education:' (Art - 2), and 'Business:'. It includes a text input for 'By keyword:' and a green 'Search' button.
- Forum Updates:** A section for forum updates, showing a profile for 'gotrackinc.com' with the last post by 'kasperholly1' inside a thread titled 'WizTeach Improvements / New Features'.

Go to <http://www.youtube.com/TeamBoard Australia> to see the features of WizTeach and how to use them in your classroom.

The screenshot shows the YouTube channel page for TeamBoard Australia. The channel name is 'TeamBoard Australia' with a 'Subscribe' button and an 'Uploads' tab. The main video player displays a video titled 'TeamBoard Australia WizTeach Introductory Presentation' with a red 'TEAM BOARD Australia' logo. A green arrow points to the search bar in the top right corner of the video player area, with the text 'Search here to find relevant tutorials'. On the right side, there is a list of recent uploads, including:

- TeamBoard Australia WizTeach (2,446 views - 9 months ago)
- TeamBoard Australia: Setting Up (391 views - 9 months ago)
- TeamBoard Australia: Numbers Tools (185 views - 9 months ago)
- TeamBoard Australia: Capture Tools (165 views - 9 months ago)
- TeamBoard Australia: Measurement Tools (136 views - 9 months ago)