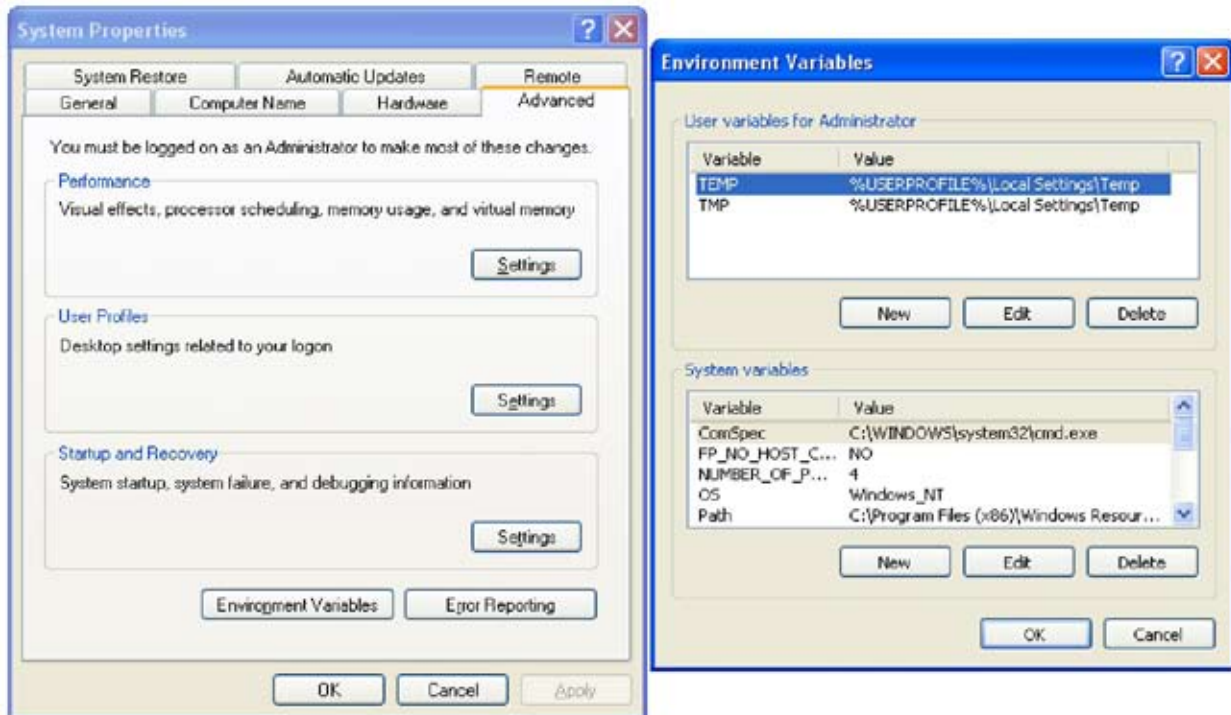


Installing TeamBoard on MOE V2.0

1. Log on to the machine locally with the administrator or OC log on
2. Right click My Computer and go properties



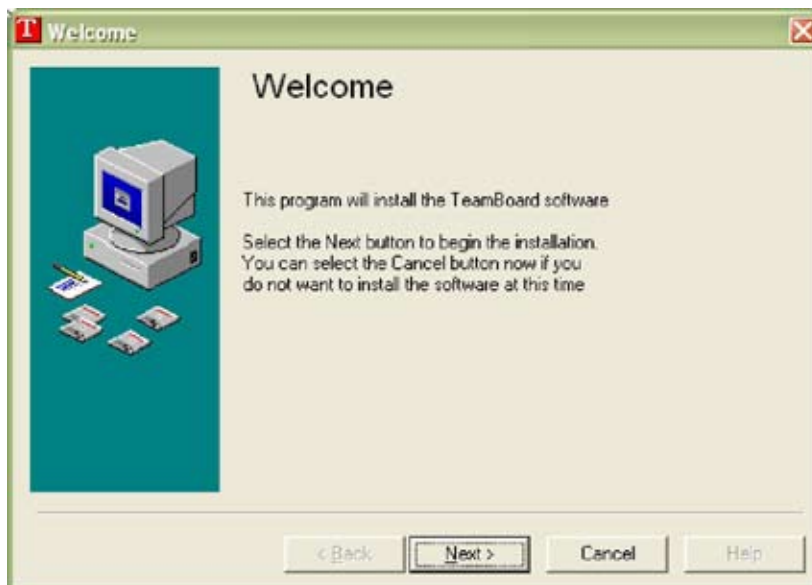
3. Now go to the Advanced tab then click on Environment Variables at the bottom



4. Now you will get another box pop up. In the first area with the white space there will be two Variables. One is TEMP and the other is TMP.
5. We need to make note of these two Values in each Variable.
6. Once you have the two Variables written down highlight each Variable and click edit.
7. Clear out the values that each one brings up. Now enter C:\Temp for each Variable.



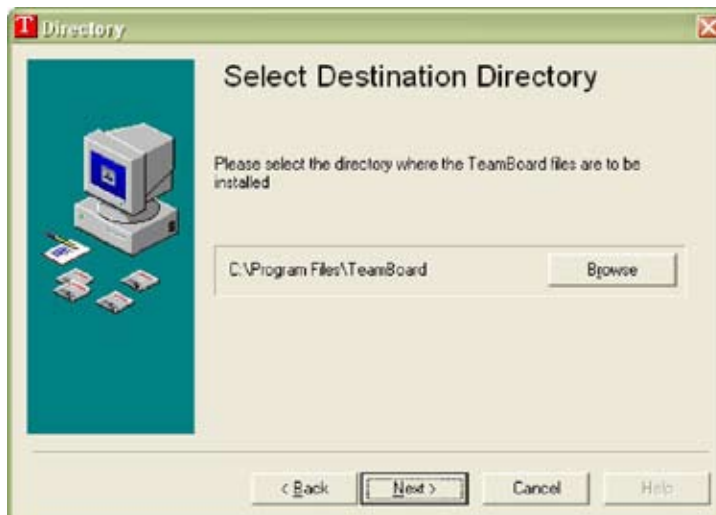
8. Click OK and then OK on the system properties
9. Insert the Team Board CD and run the setup.exe (This installation was done with version 4.21. If you have version 5 the setup is very similar.)
10. When the setup runs it should look like this



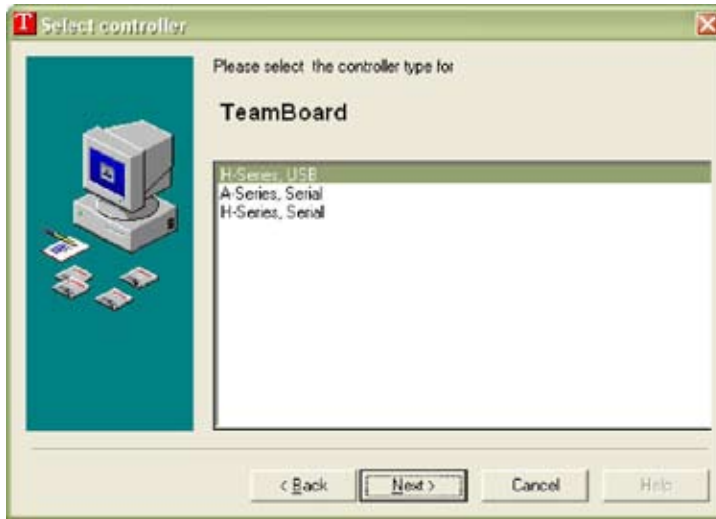
11. Click next at the welcome screen
12. Click accept at the license agreement



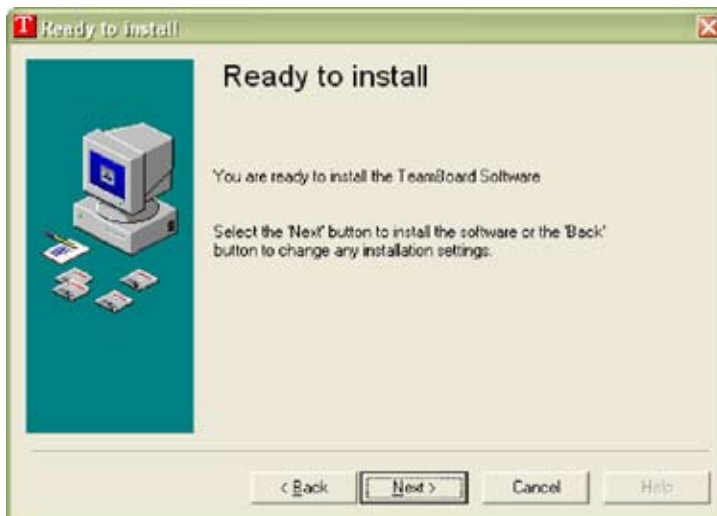
13. Install the software into the default location. This should be C:\Program Files
14. If you are installing your applications into C:\LocApps you can install it into here.



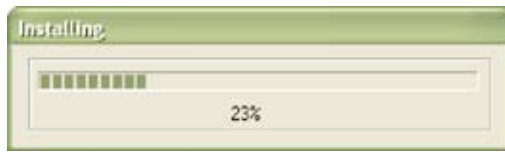
15. At the select controller screen select the correct item for your Team Board. For this installation the Team Board is using the H Series USB controller.



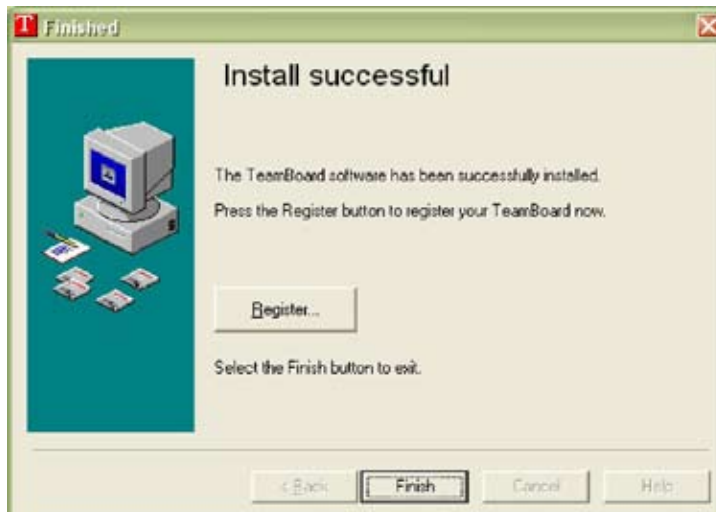
16. Click next and then hit next at the ready to install screen.



17. Installing should look like this



18. Hit finish once setup has completed.



19. At the reboot screen hit yes



20. Once the machine has rebooted log back in as the local Administrator.

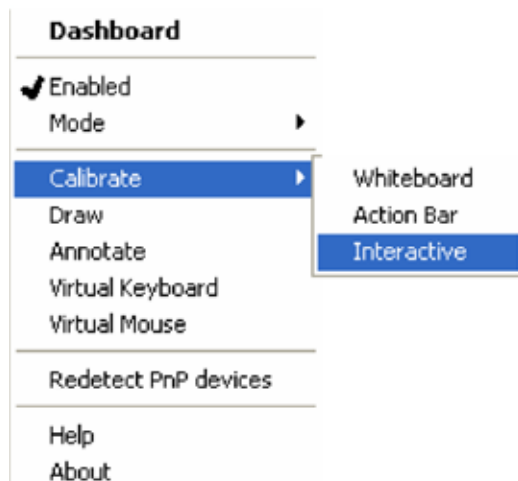
21. The start menu shortcuts should look like this.



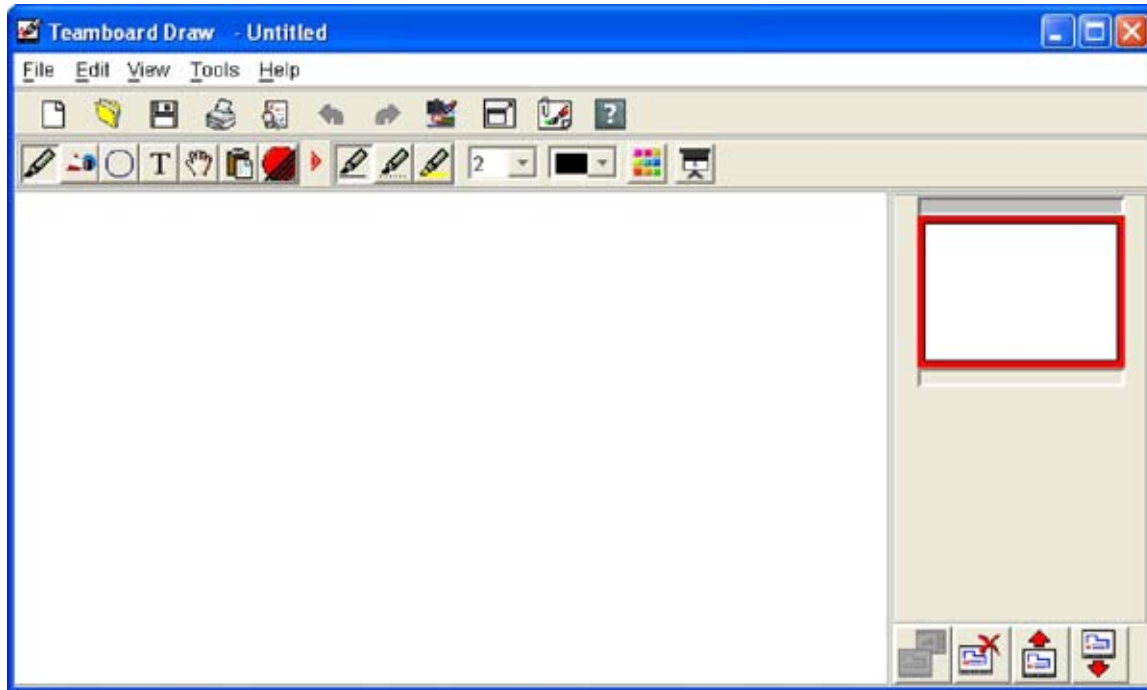
22. Now down in the system tray near the clock you should have an icon like this



23. At this point connect the Team Board USB cable into the PC and let it install the drivers



24. Once the drivers are installed right click on the red icon and go to Calibrate-> Interactive
25. Now you have to press the white board where all the cross points are.
26. Once this is down the Team Board has been configured and you can start using Team Draw



27. Once the TeamBoard is all setup and working you need to go back into the Environment Variables and change the two variables TEMP and TMP back to the originals settings.
28. This completes the installation guide for installing Teamboard on MOE v2.0

Stuart Tonks

MOE Deployment Team